



SurgiPro

Needle Holder for Laparoscopy



PRO GRIP *New Style*



aluminium anodized handle,
new designed, straight, for more comfortable grip
allow easy handling



aluminium anodized handle,
new designed, curved, for more comfortable grip
allow easy handling



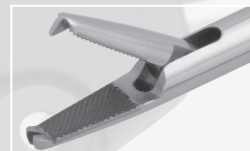
Luer Lock
flushing port for
optimal accessibility



toothed ratchet
for always optimal
positioning, with
overload protection



the new design
tip with 1x2 teeth
additional security



Needleholder



Description	Ø	length	Axial Handle straight	Axial Handle curved
tip straight, TC	5 mm	330 mm	30-50400.33SP	30-50410.33SP
tip straight, TC	5 mm	450 mm	30-50400.45SP	30-50410.45SP
tip straight, TC	3 mm	220 mm	30-30400.22SP	30-30410.22SP
tip straight, TC	3 mm	330 mm	30-30400.33SP	30-30410.33SP
tip curved left, TC	5 mm	330 mm	30-50401.33SP	30-50411.33SP
tip curved left, TC	5 mm	450 mm	30-50401.45SP	30-50411.45SP
tip curved left, TC	3 mm	220 mm	30-30401.22SP	30-30411.22SP
tip curved left, TC	3 mm	330 mm	30-30401.33SP	30-30411.33SP
tip curved right, TC	5 mm	330 mm	30-50402.33SP	30-50412.33SP
tip curved right, TC	5 mm	450 mm	30-50402.45SP	30-50412.45SP
tip curved right, TC	3 mm	220 mm	30-30402.22SP	30-30412.22SP
tip curved right, TC	3 mm	330 mm	30-30402.33SP	30-30412.33SP
tip straight „Flamingo“	5 mm	330 mm	30-50403.33SP	30-50413.33SP
tip straight „Flamingo“	5 mm	450 mm	30-50403.45SP	30-50413.45SP
tip straight 1x2 teeth, TC	5 mm	330 mm	30-50404.33SP	30-50414.33SP
tip straight 1x2 teeth, TC	5 mm	450 mm	30-50404.45SP	30-50414.45SP
tip straight, serrated	5 mm	330 mm	30-50405.33SP	30-50415.33SP
tip straight, serrated	5 mm	450 mm	30-50405.45SP	30-50415.45SP



4200 Boston St.
Baltimore, Md 21224
E-Mail info@surgipros.com
www.surgipros.com